

For Residential and Commercial Applications

Job Name		Engineer / Architect	
Job Location		Wholesaler	
Submittal Date		Contractor	

CA Series Female Iron Pipe x Male Iron Pipe Cooler Adaptor w/ Side Tap

Use: For use with low pressure air, water, gas and fluids (lubricant may not be compatible with some fluids)

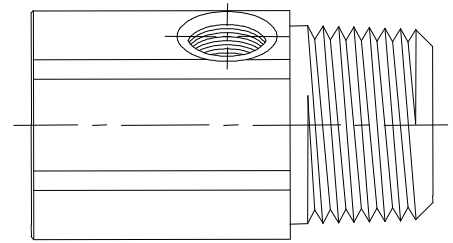
Design Features:

- **Machined one-piece brass body** provides strength, durability and long-lasting performance

Operating Specifications:

Temperature: -65° F to 250° F
40° F to 140° F for water applications
115° F maximum continuous use temperatures

Working Pressure: 150 psi maximum



MATERIAL SPECIFICATIONS

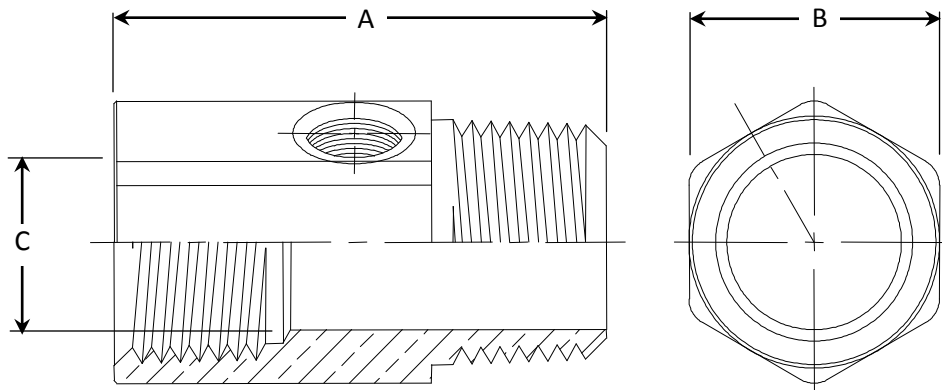
Fitting	C36000 brass
----------------	--------------

PART DIMENSIONS (Inches)

Model	DIM. A	HEX. B	DIA. C
CA-44	1.72	7/8"	.609
CA-45	1.85	1-1/8"	.781

Part Listing:

- ☐ CA-44 1/2" F.I.P. x 1/2" M.I.P. with 1/8" F.I.P. side tap
- ☐ CA-44 B 1/2" F.I.P. x 1/2" M.I.P. with 1/8" F.I.P. side tap, bulk
- ☐ CA-45 3/4" F.I.P. x 3/4" M.I.P. with 1/8" F.I.P. side tap
- ☐ CA-45 B 3/4" F.I.P. x 3/4" M.I.P. with 1/8" F.I.P. side tap, bulk



This specification and all information contained herein is the confidential and exclusive property of BrassCraft Manufacturing, and shall not be disclosed to others without the written consent of BrassCraft. This specification must be returned to BrassCraft if requested.

BrassCraft®